

Center for Developmental Behavioral Pediatrics

2009-2010 1st and 2nd Quarter Report
(July through December 2009)

QUICK OVERVIEW

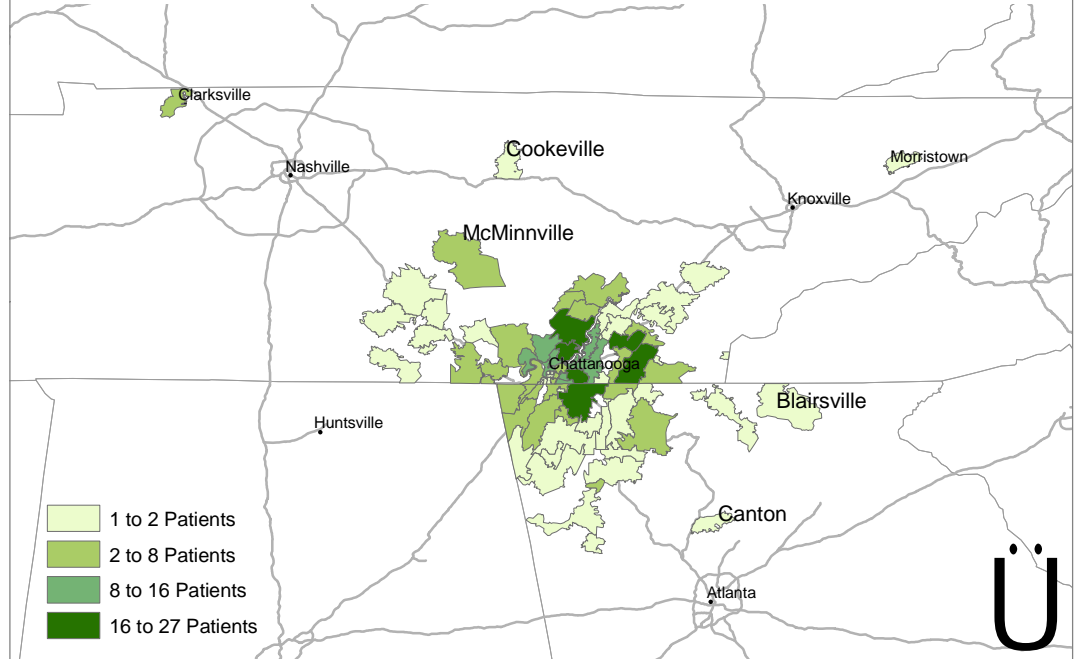
Regional areas with the greatest number of patients include:

- Ringgold, GA - 27 patients
- East Brainerd/Hamilton Place area - 27 patients
- Hixson, TN - 23 patients
- Soddy Daisy, TN - 21 patients
- Cleveland, TN - 20 patients

The furthest distance traveled was from Clarksville, TN (approximately 165 miles)

There were a total of 397 patients seen at least one time between July and December 2009. They represented 78 zip codes from around the region.

**Total number of patients seen by zip code
(July through December 2009)**



**Geographic expansion of pediatric center patients from 1st quarter to 2nd quarter
2009-2010 (July through December 2009).**

This map shows how our reach is spreading geographically into the region.

